

## Growing Business Award 2011

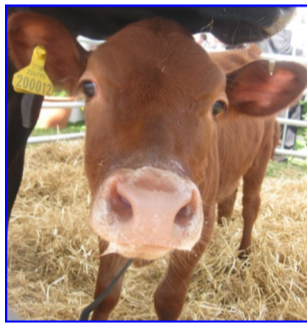
*"Agriculture is a profession that I have been interested in since a very early age and it was inevitable that I would pursue a career in farming after leaving school. My main love is livestock, in particular cattle, so you can probably imagine my delight as a 14 year old – many moons ago now! – that my parents bought me a Dexter heifer. My herd of pedigree Dexter cattle has grown steadily over the last few years and now totals 34 altogether which has helped to turn my 'hobby' into a business. Dexter beef is becoming increasingly popular due to its carcass size, taste, texture and flavour and it was with this in mind that I decided that rather than just produce beef for my own use, that others such be able to experience the delights of Dexter beef!*

*I have been a member of Norfolk Young Farmers for a number of years and with the support of the Farming and Business Forum, I entered the 2011 Growing Business Award. Although this wasn't my first time of entering the award, I was thrilled to be announced as the winner at the Royal Norfolk Show and without a doubt, winning the award will give my business a much-needed boost. The money from the award will be put towards marketing Waveney Dexter beef in the local area, the purchase of more stock, adding value to existing products such as beef burgers and ready meals, essential pieces of equipment and training. The help, guidance and support from everyone involved in the Forum and from LandSkills East has been invaluable. If I could offer any advice to anyone starting up a new business is to never give up; there may be difficulties in setting various stages of an enterprise up but with a bit of determination and perseverance, you will see the rewards in the end."* Helen Reeve, the 2011 award winner of the Growing Business Award.

The growing Business award is the concluding phase of the farmers and business forum which provided training for new entrants in the development of their business ideas and then the implementation of these ideas into practice.

To find out more about the Farmers and Business Forum please contact Ches Broom at [Norfolk Young Farmers](http://Norfolk Young Farmers).

For information on Waveney Dexter beef please contact Helen on [hmreeve@msn.com](mailto:hmreeve@msn.com).



## June—The Farm Safety Month

The five events during the month proved to be very popular with over 380 people attending the sessions.

Each session certainly opened everyone's eyes and made them more aware of the hazards and lack of safety used or not used on farms over the East of England.

It is very rewarding to see that many attendees made a promise to take back to their farm, such as: check PTO shafts and ladders more regularly, improve signage, raise awareness and prevent accidents from happening and most importantly to review farm safety aspects regularly.

A particularly big thank you to all those partners and friends of LandSkills East for helping during the month of June. LandSkills East continues to run training courses on farm safety and first aid, to find the these please follow this [link](#).



## Focus Farms are Launched across the East of England

[EBLEX](#) have established a network of Focus farms to act as training centres for beef and sheep farmers across the region.

The first Essex meeting, held on 12th May looked at maximising herd fertility considering health and performance of the cow and bull to maximise outputs and profitability. While the first Suffolk meeting, held on 12th July gave tips and advice on maximising the breeding performance of the flock and flock health.

The first Norfolk beef meeting is being held near Holt on 27th July to consider different options for feeding growing cattle, finishing cattle and cows and calves in light of the current poor grazing conditions and low silage yields for this season.

Further meetings are planned for the rest of the year for more details please contact Hellen Tordoff on 0870 609 1840

To find out about further LandSkills East courses for livestock farmers please follow this [link](#).



**A sample of some of the new courses which have been approved over the last month by LandSkills East. Please follow the link for further information or call the provider directly.**

<a href="#">Visual Basic for Excel</a> —for advance user exploring VBA	Jarrold Training	01603 677107
<a href="#">Hygiene &amp; Biosecurity</a> — for poultry farm managers and stockmen	Poultec Training Ltd	01362 850983
<a href="#">Creative Thinking</a> —improve individual and team thinking and motivation	Broadland Training Services	01603 430611
<a href="#">Safety Awareness</a> —how to identify basic farm hazards and rectify them	Traineast	01366 500050
<a href="#">Straw Bale House</a> —practical course, why & how to build a straw house	Essex County Council	01245 437672
<a href="#">Potato Enterprise 2011-12</a> — agronomic & legislative aspect of potato production	Traineast	01366 500050
<a href="#">Health &amp; Safety for Farmers</a> —raise awareness of H&S in the workplace	Poultec Training Ltd	013662 850983
<a href="#">Butchery Skills for the Beginner</a> - learn how to cut, present, improve profit margins and develop your business	Traineast	01366 500050
<a href="#">Excel Standard</a> —introduction of spreadsheeting	Jarrold Training	01603 677107
<a href="#">Meeting the Challenge</a> —seminar for the food industry	EFFP	01379 586622

## Training to Help Reduce the Green House Impact from Growing Malting Barley

The programme is a collaboration between HGCA, [NIAB/TAG](#), Munton's Malt and LandSkills East has created a practical and interactive knowledge transfer project for malting barley growers. The training brings the supply chain and research together to look at how the carbon footprint of malting barley production can be cut.

The major contributor to the carbon footprint of the malt supply chain is the growing of malting barley with fuel and fertiliser use the main contributor of the GHG emissions. Climate change aside, looking at alternative growing strategies and adopting new technologies to improve input utilization will ultimately improve the farmers operational efficiency.

The launch at Munton's Stowmarket site was attended by a near capacity group of farmers who experienced a tour of Munton's production facilities. The grower feedback was excellent with more than 85% of farmers rating the presentations as either interesting or very interesting and 100% stating the event was useful. The May launch was followed by an open day at NIAB/TAGs trail plots at Morley which was attended by over 200 growers, and further meetings are planned for post harvest. To find out more about this course please follow this [link](#).

Steve Barras Business Improvement Manager HGCA said 'We have seen considerable interest in this programme. It is a great example of collaboration across the supply chain to address industry challenges. Bringing together researchers, growers and processors in a practical way is bringing benefits to all parts of the supply chain.'

To find out about further arable training programme run through LandSkills East please follow this [link](#).

